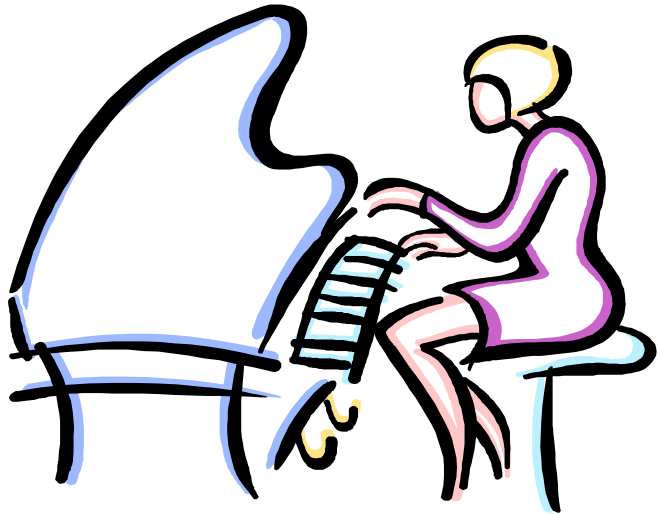


# Piano Recital



## Information

Date: \_\_\_\_\_

Time: \_\_\_\_\_

Students Arrive by: \_\_\_\_\_

Location:

Steinway Piano Gallery  
6629 Mineral Point Rd, Madison  
(608) 237-7373 SteinwayMadison.com

## Play, Practice & Perform

Student: \_\_\_\_\_

## Important Information

If you have a last minute emergency and will not be able to attend, please contact your teacher at:

\_\_\_\_\_

Postponements due to inclement weather or other reasons will be posted at [www.SteinwayMadison.com](http://www.SteinwayMadison.com)

To limit distractions, our recital will be video recorded using in-house equipment. Your student's video will be made available to you at no cost a few days after the recital. See the signup sheet at the recital.